

Open

Bad habits, goodbye!



BIS, GMA FREE
**BPA
FREE**
NO BISPHENOL-A



AMCOP[®]



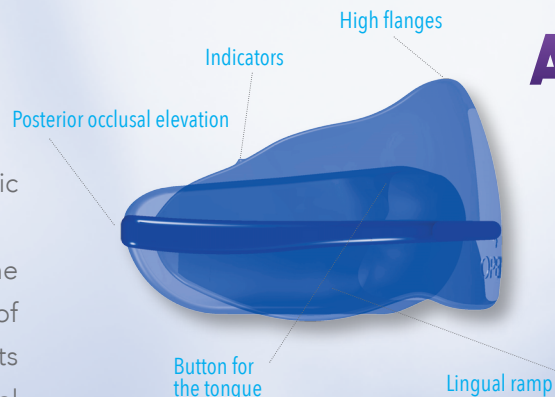

ELASTODONTIC[®]
therapy

infodonzia
M[®]
GRUPPO
MICERIUM

Open

Open is a new Elastodontic Device of the **Amcop**

Bio-Activators range, indicated for the treatment of dental arches, with skeletal malocclusion, of the anterior open bite type (Open Bite); which has as its determining cause, bad habits regarding atypical swallowing and a specific skull-mandibular skeletal decompensation. The Device must be prescribed by the Orthodontist after a correct diagnosis for a correct treatment plan to be performed.



AMCOP[®]



Before starting treatment with the **Open** Device, it is necessary, through an accurate cephalometric analysis in latero-lateral projection of the telerradiographs of the skull, to understand the type of Open Bite that must be specifically skeletal. The specific orthodontic-orthopedic action, procured by the Device, takes

place through the release of certain skeletal skull-facial structures in anteroflexion movement with the restoration, in equilibrium, of the occlusal plane, with consequent resolution of the anterior open bite (Open Bite). The occlusal plane of the **Open** Bio-Activator is raised posteriorly and has, as its purpose, a

specific pressure action on the posterior molars. The occlusal elevation will have a "fulcrum-like" function, such as to restore the occlusal plane horizontally. **It is emphasized that the Device in question replaces the application of clamps on first class Amcop Bio-Activator devices.**

The Device has been designed with an occlusal guide suitable to contain the different types of arch shapes. For a functional education of the tongue, as in the Amcop Bio-Activators, the button is present in the plantar area, corresponding to the palatine spot (upper retroincisive palatine area).

OPEN 1

Extra Small Device
Blue color coded
Cross measurement of 45mm*

OPEN 2

Small Device
Blue color coded
Cross measurement of 50mm*

OPEN 3

Medium Device
Blue color coded
Cross measurement of 55mm*

OPEN 4

Large Device
Blue color coded
Cross measurement of 60mm*

OPEN 5

Extra Large Device
Blue color coded
Cross measurement of 65mm*

* Measure taken from the transverse distance that separates the vestibular cusps of the upper sixths

Open



Bad habits, goodbye!

AMCOP
Open

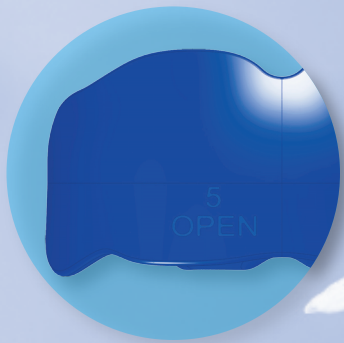
CONTRAINDICATIONS

The **Open** Device is contraindicated in case of:

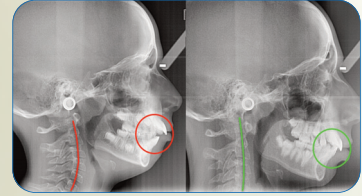
- Specific problems with the temporomandibular joints (TMJ)
- Dental elements with marked periodontal mobility
- Overt gingivitis

Open Devices are available in five sizes.

They are distinguished from other Devices, and from each other, through codes positioned in the front right part of the lower flange.



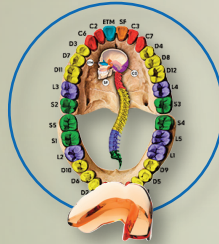
Open



casì clinici Dr. F. Cardarelli

DEVICE SUITABLE FOR THE TREATMENT OF SKELETAL MALOCCLUSIONS

OTHER AMCOP devices



BIO-ACTIVATOR



INTEGRAL PLUS

ASK YOUR DENTIST

STAMP STUDY

AMCOP®

ortodonzia
M
GRUPPO
MICERIUM

ELASTODONTIC®
therapy