



EMK3N



EMK1N

Ref	Description	Q.ty
EMK3N	ENA MATRIX Trial Kit	
	Sectional Matrix 3,5 mm	10 pcs
	Sectional Matrix 4,5 mm	10 pcs
	Sectional Matrix 5,5 mm	10 pcs
	Sectional Matrix 6,5 mm	10 pcs
	Small wooden wedge	10 pcs
	Medium wooden wedge	10 pcs
	Large wooden wedge	10 pcs
	Tweezers for Matrix/wedge	1 pc
	Forceps for ring	1 pc
	Molar ring (black)	1 pc
EMK1N	ENA MATRIX KIT	
	Sectional Matrix 3,5 mm	25 pcs
	Sectional Matrix 4,5 mm	25 pcs
	Sectional Matrix 5,5 mm	25 pcs
	Sectional Matrix 6,5 mm	25 pcs
	Small wooden wedge	25 pcs
	Medium wooden wedge	25 pcs
	Large wooden wedge	25 pcs
	Tweezers for Matrix/wedge	1 pc
	Forceps for ring	1 pc
	Molar ring (black)	1 pc
Premolar ring (red)	1 pc	
EMP1	Tweezers for Matrix/wedge	1 pc
EMP2	Forceps for ring	1 pc

RING

- Ni-Ti ring for an excellent resistance
- Elastic memory which guarantees a long duration and precise contacts
- Autoclavable plastic tines reinforced with glass fibre, for an extraordinary retention
- Better adjustment to the tooth surface to create a cavity with an ideal shape which allows to save time during finishing
- Available in 2 sizes, "Standard" and "Narrow", to ensure an optimal separation strength even in the smaller teeth

Anatomical MATRIX

- Anatomical cervical shape with marginal ridges to reduce the time for finishing. Easier to burnish
- Tines with hole which allow the positioning and removal with the specific tweezers without any problem

Ref	Description	Q.ty
EMAM	NiTi "Standard" ring for molar (black)	1 pc
EMAP	NiTi "Narrow" ring for premolar (red)	1 pc
EM35	Sectional Matrix 3,5 mm	100 pcs
EM45	Sectional Matrix 4,5 mm	100 pcs
EM55	Sectional Matrix 5,5 mm	100 pcs
EM65	Sectional Matrix 6,5 mm	100 pcs

Diastema matrices



EMT1 EMT2 EMT3

Ref	Description	Q.ty
EMT	ENA MATRIX KIT FOR DIASTEMA	
	Transparent matrix for diastema closure sup. mesial	5 pcs
	Transparent matrix for diastema closure sup. distal	5 pcs
	Transparent matrix for diastema closure inf. incisor	5 pcs
EMT1	Transparent matrix for diastema closure sup. mesial	25 pcs
EMT2	Transparent matrix for diastema closure sup. distal	25 pcs
EMT3	Transparent matrix for diastema closure inf. incisor	25 pcs

ENA MATRIX

Sectional Matrix "THIN" 35 micron
Ideal when there are space problems



EMKC



EMC35

EMC45

EMC55

EMC65

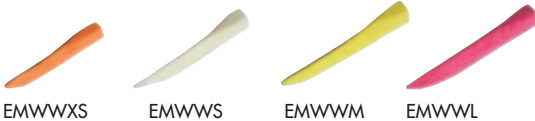
ENA WEDGE

Available 3 sizes of plastic wedges and 4 sizes of wooden wedges

- They can anatomically adapt to the interproximal area and allow a complete seal both on the vestibular and lingual side
- In plastic wedges a hole, in the handle, allows the positioning and removal with the specific tweezers without any problem.



EMWW



EMWWXS

EMWWS

EMWWM

EMWWL

Instruments



EMAS

Plastic wedge

Ref	Description	Q.ty
EMW0S	Small plastic wedge (white)	100 pcs
EMW0M	Medium plastic wedge (pink)	100 pcs
EMW0L	Large plastic wedge (violet)	100 pcs

Wooden wedge

Ref	Description	Q.ty
EMWW	WOODEN WEDGE KIT Extra small wooden wedge (orange) Small wooden wedge (white) Medium wooden wedge (yellow) Large wooden wedge (pink)	100 pcs 100 pcs 100 pcs 100 pcs
EMWWXS	Extra small wooden wedge (orange)	100 pcs
EMWWS	Small wooden wedge (white)	100 pcs
EMWWM	Medium wooden wedge (yellow)	100 pcs
EMWWL	Large wooden wedge (pink)	100 pcs

Ref	Description	Q.ty
EMKC	SECTIONAL MATRIX KIT "THIN" 35 MICRON Sectional matrix 35 micron Small Sectional matrix 35 micron Medium Sectional matrix 35 micron Large Sectional matrix 35 micron Subgingival Extra small wooden wedge (orange) Small wooden wedge (white) Medium wooden wedge (yellow) Large wooden wedge (pink)	25 pcs 25 pcs 25 pcs 25 pcs 25 pcs 25 pcs 25 pcs 25 pcs
EMC35	Sectional matrix 35 micron Small	50 pcs
EMC45	Sectional matrix 35 micron Medium	50 pcs
EMC55	Sectional matrix 35 micron Large	50 pcs
EMC65	Sectional matrix 35 micron Subgingival	50 pcs

Ref	Description	Q.ty
EMAS	Stainless steel ring with "V" shape tines	1 pc

Transparent and metal matrix roll

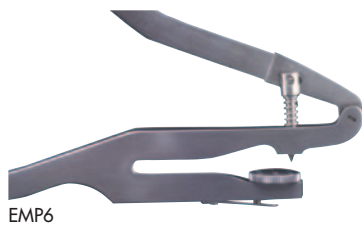


Ref	Description	Q.ty
EMRT08	Transparent matrix (height 8 mm - thickness 0,050 mm)	10 m
EMRT10	Transparent matrix (height 10 mm thickness 0,050 mm)	10 m
EMRM53	Metal matrix (height 5 mm - thickness 0,035mm)	3 m
EMRM55	Metal matrix (height 5 mm - thickness 0,050 mm)	3 m
EMRM63	Metal matrix (height 6 mm - thickness 0,035mm)	3 m
EMRM65	Metal matrix (height 6 mm - thickness 0,050 mm)	3 m
EMRM73	Metal matrix (height 7 mm - thickness 0,035mm)	3 m
EMRM75	Metal matrix (height 7 mm - thickness 0,050 mm)	3 m


Rubber Dam Instruments developed by Dr. Lorenzo Vanini



Ref	Description	Q.ty
EMKU	ENA MATRIX RUBBER DAM KIT Rubber Dam Frame (Large, Medium, Small) Rubber Dam Punch Forceps for Clamps Interdental Floss Rubber Dam Clamps	3 pcs 1 pc 1 pc 1 pc 5 pcs




EMU	ENA MATRIX RUBBER DAM CLAMP KIT assorted clamps	5 pcs
-----	---	-------

EMU02	Ena Matrix Rubber Dam Clamp 2 for posterior	 1 pc
-------	---	--

EMU22	Ena Matrix Rubber Dam Clamp 22 for posterior	 1 pc
-------	--	--

EMU41	Ena Matrix Rubber Dam Clamp 41 for anterior	 1 pc
-------	---	--

EMU51	Ena Matrix Rubber Dam Clamp 51 for anterior	 1 pc
-------	---	--

EMU61	Ena Matrix Rubber Dam Clamp 61 for anterior	 1 pc
-------	---	--

EMP5	Ena Matrix Rubber Dam Frame small - medium - large	3 pcs
------	--	-------

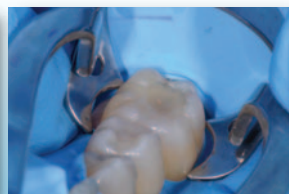
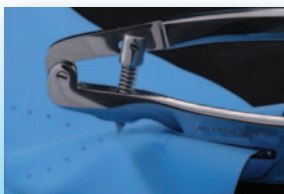
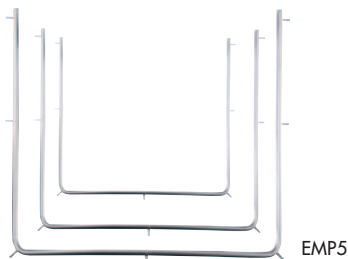
EMP5S	Ena Matrix Rubber Dam Frame small	1 pc
-------	-----------------------------------	------

EMP5M	Ena Matrix Rubber Dam Frame medium	1 pc
-------	------------------------------------	------

EMP5L	Ena Matrix Rubber Dam Frame large	1 pc
-------	-----------------------------------	------

EMP6	Ena Matrix Rubber Dam Punch	1 pc
------	-----------------------------	------

EMP7	Ena Matrix Rubber Dam Forceps	1 pc
------	-------------------------------	------



Clinical images courtesy Dr. Francesco Simoni