

ENA POST & ENA CEM



UNIQUE
ADHESION

ENA  cem^{HF}

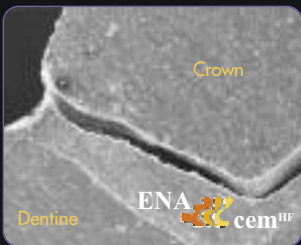
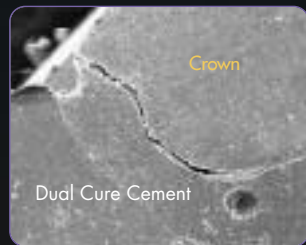
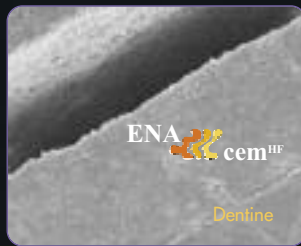
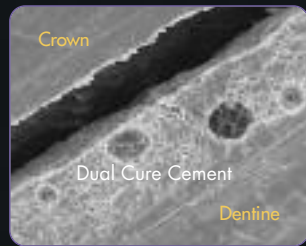
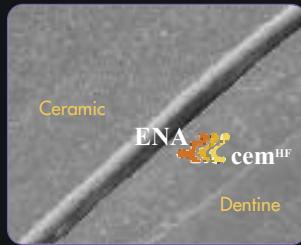
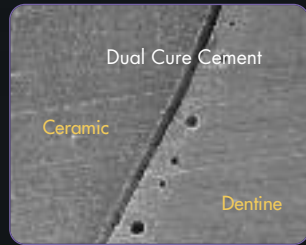
PERFECT
BIOCOMPATIBILITY



WITH ENA POST
ED ENA CEM^{HF}

ENA POST • ENA CEM^{HF}

ANALYSIS UNDER MAGNIFICATION



Images under magnification show the homogeneity of **Ena Cem^{HF}** unlike other Low Viscosity Dual Cure Cement that contains air bubbles

EXCELLENT LUTING

ENA CEM^{HF}

Dual cement with composite base

- Crown & bridge luting
- Post luting & core build-up
- Composite and ceramic veneers, inlay and onlay luting

PRODUCT	Ena Cem ^{HF}	Flow Cement Dual/Light curing	High viscosity composite
Thickness μm (Force 35N)	45	28/55	> 500
Vickers hardness MPa	670	270	600/700
Young Modulus MPa	12850	5471	8000/11000
Flexural Strength MPa	116	88	140
Compressive Strength MPa	342	216	400
Radiopacity	210% AI	30% AI	

- Highly filled (77% in weight)
- Same physical characteristics as Enamel plus HRI
- No air bubbles (unlike Flows)
- Minimum thickness <50μm
- Fluorescent and radiopaque



Adhesive system *Ena Etch-Ena Bond* with catalyst





ENA POST luting and core build-up with ENA CEM^{HF}
Case by Dr. Lorenzo Vanini



Aesthetic Direct restoration made with ENA POST and Enamel Plus HRI

ENA POST Glass Fiber Post

- Aesthetic: fluorescent and dentine colour
- Functional: same elasticity of dentine
- Perfectly integrated with the tooth, cement and restorative material
- The only post with silanized fibers inserted in the same resin of restorative material (Enamel plus HRI)
- Perfect silanization and integration of the fibers into the resin without any imperfection
- Visible on X-ray only
- Coloured rings for easy identification

*PERFECT
CANAL SEAL*

CONICITY 2%



The coloured rings can be used to measure the canal depth...

CONICITY 10%



...by positioning them where the post has to be cut; remove them before luting

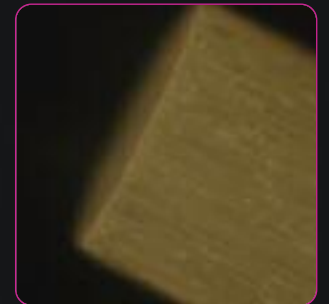
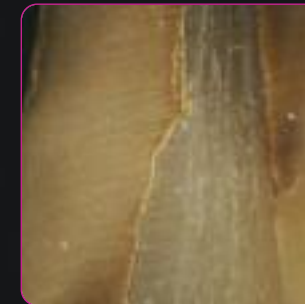
ANALYSIS UNDER MAGNIFICATION



Carbon, Standard Glass fiber post and ENA POST glass fiber post (right picture under UV light).



ENA POST sections under magnification (by Prof. V. Kaitzas).



PERFECT AESTHETIC AND
FUNCTIONAL INTEGRATION



ENA POST



ENA CEM



WITH GLASS FIBER POST
AND COMPOSITE

CP1000

AESTHETIC POST KIT	
ENA POST 10% CONICITY:	
Ena Post Fiber Post \varnothing 0,5 - 1,6 mm	5 Pcs
Ena Post Fiber Post \varnothing 0,7 - 1,8 mm	5 Pcs
Ena Post Fiber Post \varnothing 0,9 - 2,0 mm	5 Pcs
Ena Post Fiber Post \varnothing 1,1 - 2,2 mm	5 Pcs
Ena Post drill 1 x each size	4 Pcs

CP0200

AESTHETIC POST KIT	
ENA POST 2% CONICITY:	
Ena Post Fiber Post \varnothing 0,8 - 1,25 mm	5 Pcs
Ena Post Fiber Post \varnothing 1,0 - 1,45 mm	5 Pcs
Ena Post Fiber Post \varnothing 1,2 - 1,65 mm	5 Pcs
Ena Post Fiber Post \varnothing 1,4 - 1,88 mm	5 Pcs
Ena Post drill 1 x each size	4 Pcs

CPCK

DUAL CEMENT INTRO KIT:	
Ena Cem ^{HF} colors UD1-UD2-UD3-UD4	4x3 g
Ena Bond Bonding 2 ml	1 Pcs
Ena Bond Catalyst 2 ml	1 Pcs
Ena Etch Etching Gel 37% 2 ml	1 Pcs
Accessories	

REFILL

CPCUD1	Ena Cem ^{HF} UD1	8 g
CPCUD2	Ena Cem ^{HF} UD2	8 g
CPCUD3	Ena Cem ^{HF} UD3	8 g
CPCUD4	Ena Cem ^{HF} UD4	8 g
CPCUD5	Ena Cem ^{HF} UD5	8 g
COSM300A	Ena Bond Bonding	5 ml
COSM300D	Ena Bond Bonding Catalyst	5 ml
COSM101	Ena Etch Etching Gel 37%	2x2 ml
CPCTIPS	Automix tips brown with needle	50 Pcs
CPCTIPN	Automix tips brown	50 Pcs
CPCTIPL	Intraoral white tips	25 Pcs
COSM3A	Orange applicators with plug	50 Pcs