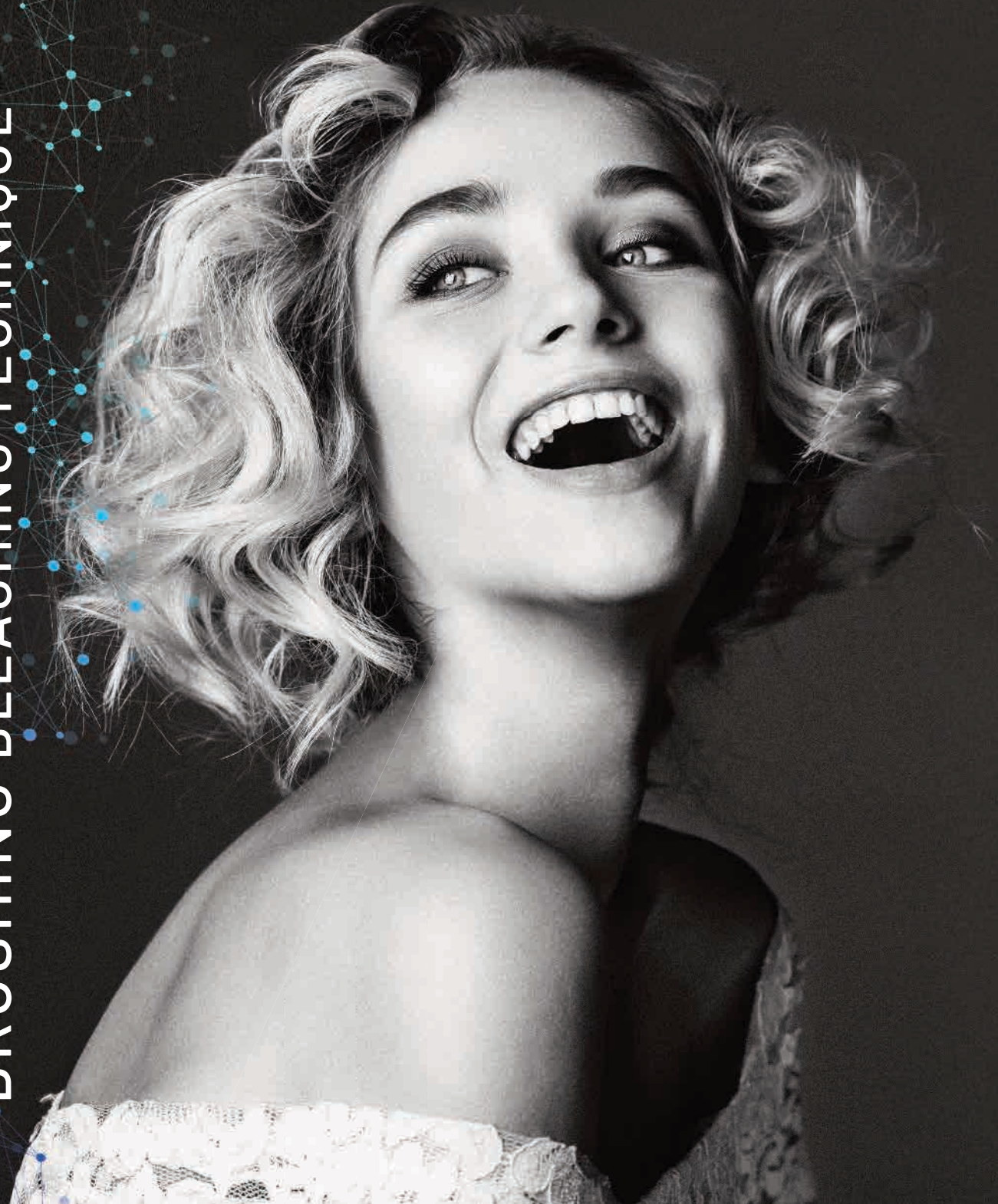


**ENNA<sup>®</sup> WHITE 2.0**

**BRUSHING BLEACHING TECHNIQUE**



# ENA®WHITE 2.0

## BRUSHING BLEACHING TECHNIQUE

CONCEIVED BY DR. LUIGI LEONARDI

## INNOVATIVE BRUSHING TECHNIQUE WHICH ACCELERATES BLEACHING PROCESS

CONCEIVED BY DR. LUIGI LEONARDI

### PHASE 1 • IN-OFFICE



### IN-OFFICE OPERATING PROTOCOL

- Tartar removal on front teeth - smile line upper and lower arch - with scaler.
- Baking soda application with moistened Smart Prophy Pink brush, mounted on contra-angle handpiece (200/250 rpm) for 2/3 min total in order to prepare the teeth for the bleaching gel.
- Application of Ena®White 2.0 gel over the entire surface of teeth to be treated: leave on for 10 to 15 min.
- Innovative treatment of anterior teeth: brush the bleaching gel with dry Smart Prophy Pink brush, mounted on contra-angle (max 300/400 rpm to avoid dispersion of the gel outside the tooth) for about 30 to 40 seconds on each tooth. **This process results in greater penetration of 6% hydrogen peroxide in the tooth increasing the concentration of active oxygen and consequently the bleaching action.**
- Removal of residual gel with water spray and rinsing. Check of the bleaching effect with the patient. Filling toothbrush dispenser with Ena®White 2.0 gel from syringe delivery to the patient with explanation of home application method.
- After 20 days, the patient comes back to the dental office for a brief control (5/10 minutes) and the toothbrush dispenser can be filled again with bleaching gel to repeat the home treatment.

ENA®WHITE 2.0 is a system for cosmetic bleaching that uses a 6 % hydrogen peroxide based bleaching gel with the special XS151™ accelerator, which activates by brushing; this action exponentially increases the absorption rate of peroxide if compared to traditional bleaching.

## REDUCED TIMING OF DAILY APPLICATION

ENA®WHITE 2.0  
BRUSHING BLEACHING TECHNIQUE

### HOME BLEACHING PROCEDURE

- Oral hygiene in the morning and in the evening. It is recommended to use the Enamel Plus multifunctional toothpaste with low abrasion and with desensitizing, slightly whitening effect of the Ena®oral Care line.
- Spill a small amount of gel on the toothbrush and brush the teeth to be treated for 30/45 sec.
- Repeat brushing for another 30 to 45 sec. after moistening the toothbrush under running water.
- Rinse. **The risk of irritation and sensitivity is reduced because the contact time of the tooth with the bleaching gel significantly decreases.**
- It is possible to continue the bleaching treatment after 20 days refilling the toothbrush with the same syringe during the follow-up visit. In case you want to achieve a whiter effect, you can extend the treatment by purchasing additional refills separately.
- Thus proceeding, compared to the traditional bleaching trays, it will be possible to maintain the bleaching effect by practicing the treatment indefinitely, making additional refills with minimum intervals of 3 months during follow-up visits and prescribing a reduced application to every 2 to 3 days.



### PHASE 2 • AT HOME



**2 PHASES.** 1<sup>st</sup> **In-office** where mechanical brushing is performed  
2<sup>nd</sup> **At home** with the special Ena®White 2.0 toothbrush with dispenser filled with bleaching gel (enough for a treatment of about 20 days with 2 daily applications).

## TECHNOLOGICAL OPERATIVE ADVANTAGES

- Easier to use thanks to the toothbrush with dispenser
- Greater comfort for the patient, two minutes correspond to one night with conventional, annoying bleaching trays. No ingestion of hydrogen peroxide.
- Less risk of irritation by reducing contact time: 2/3 min. per day instead of 6/8 hours to achieve the same bleaching result with bleaching trays.
- A conventional 20-days treatment provides approx. 120/160 hours contact time compared to 40/60 min. with Ena<sup>®</sup>White 2.0.

### CLINICAL CASE

Dr. Francesco Simoni



19-year-old patient  
detected colour A2 VITA Shade Guide\*



First check



Second check



Check at the end of treatment. Final colour result:  
lighter than A1 VITA Shade Guide\*

VITA<sup>®</sup> is a registered trademark of Vita Zahnfabrik H.Rauter mbH & Co. KG, Bad Säckingen - D