



ENYA BOND

33

ADHESION: **3** SAFE OPTIONS

ETCH & RINSE

ONE-BOTTLE

- Aesthetics & Retention
- Fluorescent as natural tooth
- Ethanol based special composition
- Dual catalyst used with dual composite
- **Bond strenght values over the average industry: 30 MPa***

* Test made by University of Chieti - Italy - Prof. Camillo D'Arcangelo



ETCH & RINSE

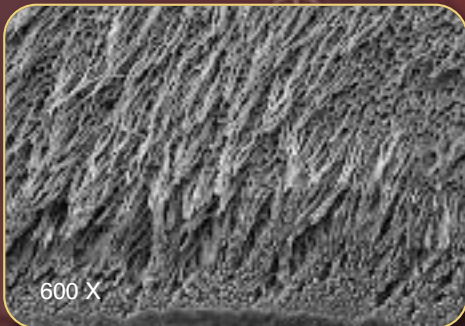
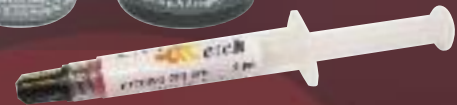
TWO-BOTTLE

IV generation two-bottle adhesive

You can get great adhesion results and a perfect seal by using Ena Bond as a primer and Ena Seal as second layer of unfilled adhesive resin; Ena Bond becomes a two-bottle adhesive system

- **Excellent adhesion values on dentine: 24 MPa***

* Test made by University of Chieti - Italy - Prof. Camillo D'Arcangelo



Images at SEM 600X and 3000X of the hybrid layer obtained with the two-bottle technique; note quantity and depth of resin tags
University of Chieti - Italy
(Prof. Camillo D'Arcangelo)

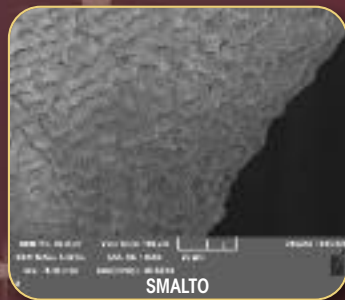
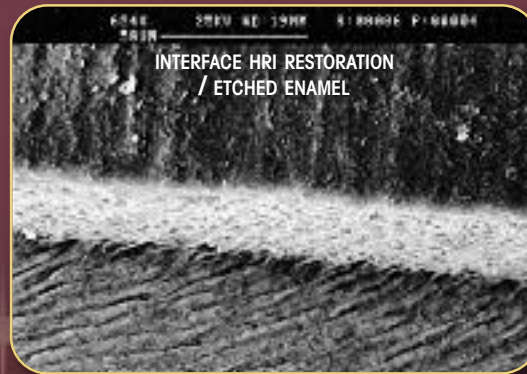
SELF ETCHING

- Bond strength values over the average industry*:
 - 24 MPa on dentine
 - 17 MPa on no-etched enamel
 - 20 MPa on etched enamel
- Special composition in water solution
- Primer containing 10-MDP monomer for a better adhesion on enamel, dentin and on metal alloys



Treated Enamel and dentine with Ena Bond SE (images at electron microscope SEM)

Microscopy made by University of Tor Vergata (Rome-Italy) Prof. Francesco Mangani, who contributed to the realization of Ena Bond SE after 3 years of research and tests.



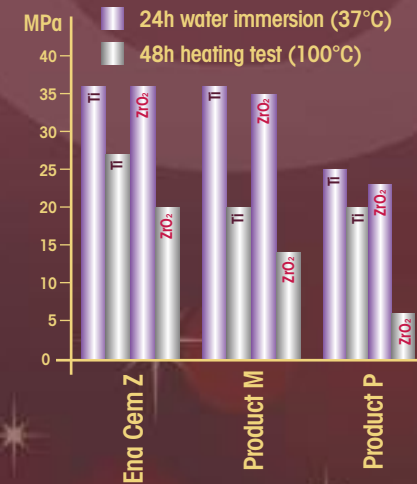
Enamel and dentine treated with Ena Bond SE (images at electron microscope SEM)

The microscopy shows the enamel surface and the "resin tags" that put in evidence the penetration of Ena Bond SE in dentine tubules (Prof. Vassilios Kaitsas)

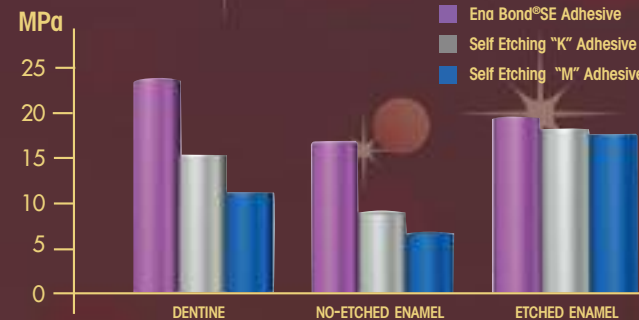
SELF CURING CEMENT FOR ZIRCONIA

Self-curing cement with special primer for luting of zirconia (ZrO₂) prosthodontic appliances on zirconia or titanium (Ti) abutment

Share Bond Strength



Micro Tensile Bond Strength



* Comparison of the adhesion data of Ena Bond SE with two different self-etching adhesive systems with Primer University of Chieti - Italy (Prof. Camillo D'Arcangelo)

CPCZK Ena Cem^z for zirconia Introductory Kit:
Self curing cement 8 g
Primer 5 ml

CPCZ Ena Cem^z for zirconia Self curing cement 8 g

CPCZP Ena Cem^z for zirconia Primer 5 ml

ENA  cem^z

ADHESION: **3** SAFE OPTIONS

ENA  bond

SELF CURING CEMENT FOR ZIRCONIA



with Special Primer



ONE-BOTTLE

Refill COSM300

ENA BOND ONE-BOTTLE ADHESIVE	
Ena Bond light curing Bonding	5 ml
Ena Etch Phosphoric acid 37%	2 ml
Accessories	

Refill

COSM300A	Ena Bond light curing Bonding	5 ml
COSM300D	Ena Bond catalyst	5 ml
COSM101B	Ena Etch Phosphoric acid 37%	29 ml

TWO-BOTTLE

Refill COSM300K

ENA BOND TWO-BOTTLE ADHESIVE	
Ena Bond light curing Bonding Primer	5 ml
Ena Seal light curing resin	5 ml
Ena Etch Phosphoric acid 37%	2 ml
Accessories	

Refill

COSM300A	Ena Bond light curing Bonding	5 ml
COSZ10	Ena Seal light curing resin	5 ml

SELF-ETCHING

Refill CFOTK

ENA BOND SE SELF-ETCHING ADHESIVE	
Ena Bond SE Primer	5 ml
Ena Bond SE light curing resin	5 ml
Ena Etch Phosphoric acid 37%	2 ml
Accessories	

Refill CFOT

ENA BOND SE SELF-ETCHING ADHESIVE	
Ena Bond SE Primer	5 ml
Ena Bond SE light curing resin	5 ml

Refill

CFOTP	Ena Bond SE Primer	5 ml
CFOTS	Ena Bond SE light curing resin	5 ml



Micerium S.p.A.
Via G. Marconi, 83-16036 Avegno (GE) Italy
Tel. (+39) 0185 7887 870 • Fax (+39) 0185 7887 970
hfo@micerium.it • www.micerium.com

File: EnaBond 08 v1_4_07-2017