



What is occlusal balance?

The concept of **OCCLUSAL BALANCE** is different from **OCCLUSAL STABILITY**: it's a dynamic concept closer to physiology. During his life, the patient changes his own occlusion physiologically, due to ageing, stress or different habits, but he never loses his Occlusal Balance, even if it adjusts.

NATURAL ENAMEL is a **HARD** enough tissue to support the chewing loads; it is at the **SAME TIME** a **WEARABLE** tissue which adapts to the occlusal adjustments. In this way, the patient can preserve his **OCCLUSAL BALANCE** although the occlusion and the position of the mandible change.



AESTHETICS
FUNCTION
POSTURE



ENAMEL^{plus} HRI[®] Function

Nowadays all restorative materials have excellent aesthetic properties which are comparable with one another, while we still know very little about their mechanical-functional features, especially in relation with occlusion.

The choice of materials is the key to get long-lasting results which approach to natural enamel according to aesthetic and above all functional and occlusal standards.

**We completely changed
the composite aesthetics
NOW....
Let's change
the occlusion therapy**



WEAR COMPARATIVE ANALYSIS

University of Chieti - Prof. Camillo D'Arcangelo

After 120.000 cycles with chewing machine vs Zirconia	Wear Depth (mm)	Volume Loss (mm ³)	Antagonist Wear (mm)
Enamel plus HRI UE2 <i>Light cured with dentist's curing unit</i>	0.485 (0.064) ^c	1.452 (0.245) ^d	0.010 (0.007)
Composite F* (enamel) <i>Light cured with dentist's curing unit</i>	0.464 (0.069) ^c	0.972 (0.247) ^{b,c,d}	0.004 (0.002)
Enamel plus HRI Function EF3 <i>Light cured with dentist's curing unit</i>	0.335 (0.069) ^b	0.529 (0.139) ^{a,b,c}	0.006 (0.001)
Enamel plus HRI UE2 <i>Light cured with Laborlux**</i>	0.463 (0.063) ^c	1.016 (0.198) ^{c,d}	0.015 (0.013)
Composite F* (enamel) <i>Light cured with Laborlux**</i>	0.459 (0.068) ^c	1.017 (0.239) ^{c,d}	0.016 (0.017)
Enamel plus HRI Function EF3 <i>Light cured with Laborlux**</i>	0.276 (0.058) ^{a,b}	0.464 (0.191) ^{a,b}	0.016 (0.003)
Pressed Ceramic	0.303 (0.065) ^{a,b}	0.531 (0.143) ^{a,b,c}	0.002 (0.002)
Gold type III	0.219 (0.060) ^a	0.328 (0.140) ^a	0.004 (0.005)
Human Enamel	0.216 (0.070) ^a	0.404 (0.200) ^a	0.013 (0.004)

* reference composite chosen after identified as the best among the ones tested during the preliminary phase

** curing unit for laboratory; it cures with heat (70°C/80°C)

**The comparative analysis highlights
the excellent wear resistance
of Enamel plus HRI Function,
light cured with dentist's curing unit
and with Laborlux**

THE MOST RESISTANT COMPOSITE ON THE MARKET

ENAMEL PLUS HRI FUNCTION IN DENTAL OFFICE



Restorations made directly in the dental office. Please note the perfect chromatic and anatomical integration.

ENAMEL HRI FUNCTION = NATURAL ENAMEL = WEAR = AESTHETICS = UNIQUE!

ENAMEL PLUS HRI FUNCTION IN LABORATORY



Case finished with adhesive overlays and crown made in HRI Function composite and crown in gold-HRI Function composite on implant. All restorations have been prepared and cemented to respect the new vertical dimension and the new occlusion achieved with diagnostic wax-up and confirmed by occlusal bite and MRI.

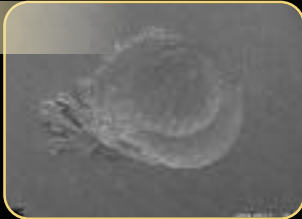
WEAR FACETS

after 120.000 cycles with chewing machine
(University of Chieti - Prof. Camillo D'Arcangelo)

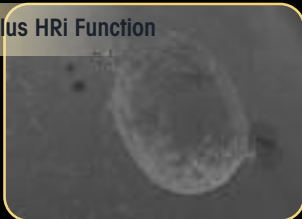
Natural enamel



Gold



Enamel plus HRI Function



F Composite



E Composite



WEAR FACETS AFTER 120.000 CYCLES

ENAMEL^{plus} HRI[®] Function

PHYSICAL DATA

Vickers Hardness:	760 Mpa
Flexural Strength:	150 Mpa
Modulus of elasticity:	11.500 Mpa
Compressive Strength:	460 Mpa

Enamel-composite system to restore the function in a micro-invasive way respecting the neuromuscular system and getting an excellent aesthetic integration. Enamel shades subject to low abrasion that are comparable to natural enamel. Ideal for use in posterior areas with direct or indirect technique and especially for prosthetic rehabilitations.





ENAMEL ^{plus} HRI® Function

Over the years we completely changed the composite aesthetics, first with **Enamel Plus HFO**, developed in cooperation with Prof. Lorenzo Vanini, and then with **Enamel Plus HRI**, the only composite with the same refractive index as natural enamel. Now we want to introduce on the market:

Enamel Plus HRI Function

the only composite,
ideal for posterior,
with mechanical and
functional characteristics
identical to gold and
similar to natural enamel,
that maintains the
OCCLUSAL BALANCE
over time



CHR6FC

ENAMEL PLUS HRI FUNCTION TRIAL KIT
including 6 syringes 2,5 g
4 dentines: UD1, UD2, UD3, UD4
1 universal enamel UE2
1 "Function" enamel EF3

CR3FC

ENAMEL PLUS HRI FUNCTION KIT
including 3 syringes 2,5 g
3 "Function" enamels: EF1, EF2, EF3

CHR6FCT

ENAMEL PLUS HRI FUNCTION TRIAL KIT
including 36 tips (6 tips x 6 shades)
4 dentines: UD1, UD2, UD3, UD4
1 universal enamel UE2
1 "Function" enamel EF3

CR3FCT

ENAMEL PLUS HRI FUNCTION KIT
including 18 tips (6 tips x 3 shades)
3 "Function enamels": EF1, EF2, EF3



Micerium S.p.A.
Via G. Marconi, 83-16036 Avegno (GE) Italy
Tel. (+39) 0185 7887 880 • Fax (+39) 0185 7887 970
hfo@micerium.it • www.micerium.com



File: Enamel plus HRI Function IND v2_0_09-2014