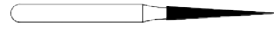
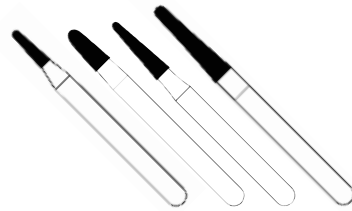


CS2LV PREPARATION FINISHING & POLISHING KIT POSTERIOR DIRECT & INDIRECT COMPOSITE

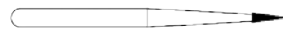
PREPARATION

- Taper flat medium grain bur 849-524-012, 849-524-016 (short teeth), 855-524-014, 856-534-016 (long teeth) for cavity preparation
- Taper flat medium grain red ring bur 849-514-012, 849-514-016 (short teeth), 855-514-014, 856-504-018 (long teeth) for to finish preparation
- Bur 859 for preparation (534-012) and finishing (504-014) of interproximal correction.
- Bur 368 for preparation (524-025) and finishing (514-025) of occlusal correction.
- Bur 811 for preparation (534-040) and finishing (504-040) of occlusal reduction.
- Tungsten round bur 014 and 018 for pathological dentine removal
- Brown rubber point SHINY33 to polish preparation



COMPOSITE FINISHING

- Flame needle red ring bur 853-514-008 for interproximal occlusal finishing
- Bur 390-504-016 for occlusal finishing



POLISHING

- Grey rubber point SHINY15 for pre-polishing
- Brush SHINY5 for polishing to be used before with 3 mμ diamond paste Shiny A then with 1 mμ diamond paste Shiny B
- Felt wheel SHINYF for shiny to be used with aluminium oxide paste Shiny C



ENA SHINY

estefica
M
GRUPPO
MICERIUM

CE 0123

MICERIUM S.p.A.
Via G. Marconi, 83
16036 Avegno (GE) - Italy
Tel. +39 0185 7887 880
Fax +39 0185 7887 970
email:hfo@micerium.it

CS1LV PREPARATION FINISHING AND POLISHING KIT ANTERIOR DIRECT COMPOSITE

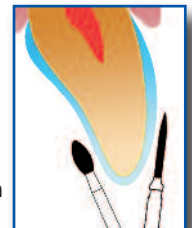
PREPARATION

- Round bur 801-524 for vestibular chamfer preparation (012 for thin enamel - 014 for thick enamel)
- Red ring round bur 801-514 for vestibular chamfer preparation (012 for thin enamel - 014 for thick enamel)
- End cut bur for 90° butt margin interproximal and lingual/palatal preparation: 839-524 (012 for thin enamel - 014 for thick enamel)
- End cut red ring bur for 90° butt margin interproximal and lingual/palatal preparation: 839-514 (012 for thin enamel - 014 for thick enamel)
- Brown rubber point SHINY33 to polish preparation



COMPOSITE FINISHING

- Flame bur 861-524-012 for big correction
- Flame red ring bur 861-514-012 for vestibular correction
- Football bur 368-524-025 for big correction
- Football red ring bur 368-514-025 for palatal correction
- Flame needle red ring bur 853-514-008 for lingual and incisal correction
- Green mounted stone or multi-blade bur (9904) for fine correction



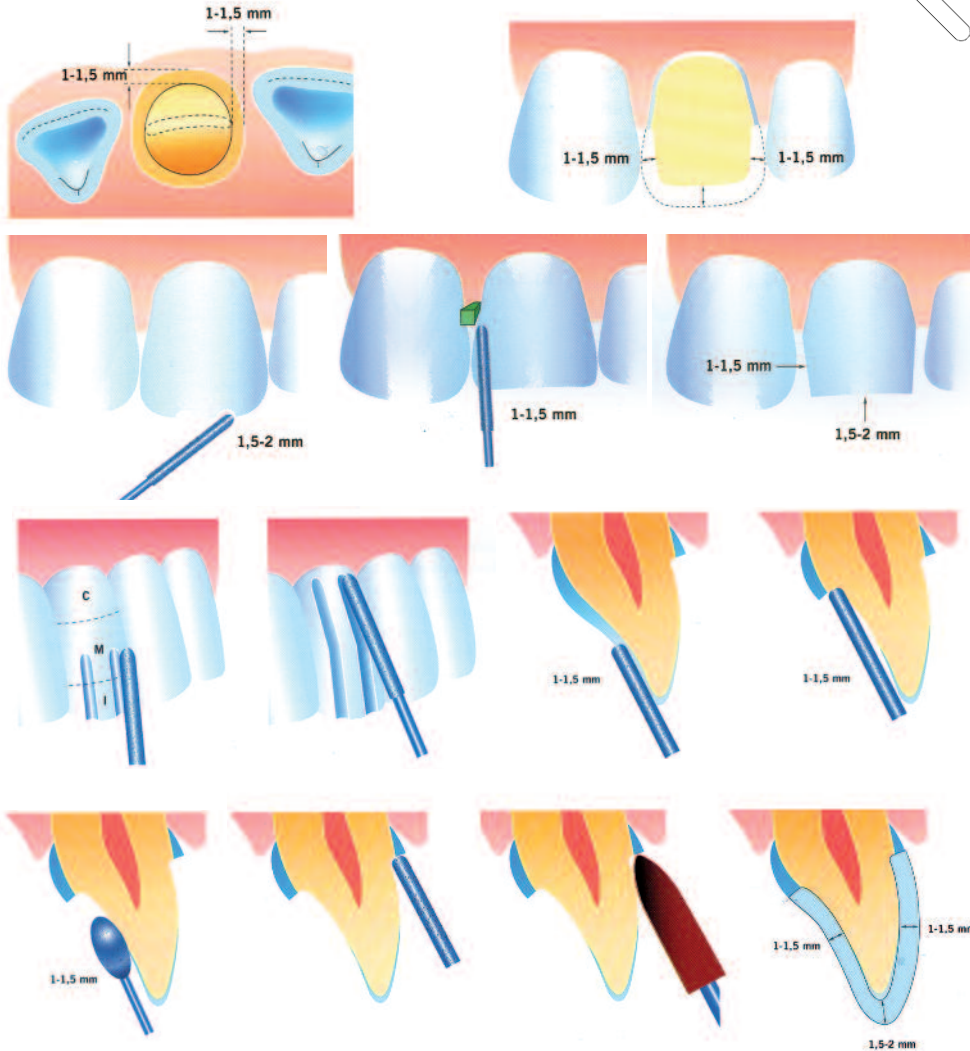
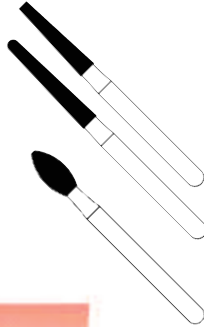
SURFACE TREATMENT AND POLISHING

- Flame needle red ring bur 853-514-008 for macro-geography (vertical)
- White rubber point SHINY14 for pre-polishing
- Carborundum green mounted stone for micro-geography (horizontal)
- Brush SHINY5 for polishing to be used before with 3 mμ diamond paste Shiny A and after with 1 mμ diamond paste Shiny B
- Felt wheel SHINYF for shiny to be used with aluminium oxide paste Shiny C

CS3LV PREPARATION FINISHING AND POLISHING KIT COMPOSITE & CERAMIC VEENER – CROWN METAL FREE

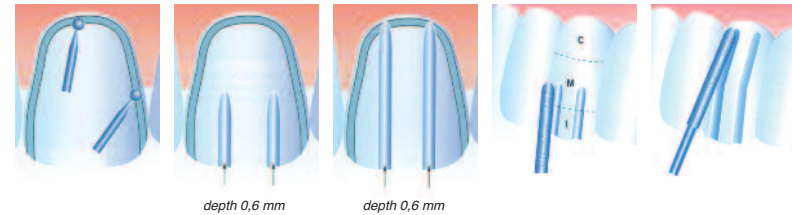
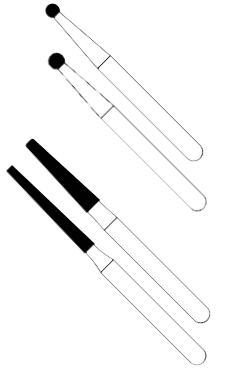
CROWN PREPARATION

- Medium grain bur 847R-524-016 (short teeth), 850-524-016 (long teeth) for die preparation (847R-514-016, 850-514-016 fine grain red ring bur to finish preparation)
- Medium grain bur 368-524-025 for palatal wall preparation (368-514-025 fine grain red ring bur to finish preparation)
- Brown rubber point SHINY33 to polish preparation



VEENER PREPARATION

- Medium grain round bur 801-524 (012 for thin enamel - 016 for thick enamel) for chamfer preparation of the veneer approximal areas (801-514-012 for thin enamel, -016 for thick enamel, fine grain red ring bur for chamfer to finish preparation)
- Medium grain bur 847R-524-016 and 848-524-012 for vestibular sulcus following the cervical, medium and incisal emergency profile inclination (847R-514-016 and 848-514-012 fine grain red ring bur to finish preparation)
- Brown rubber point SHINY33 to polish preparation



CS4LV PREPARATION AND FINISHING KIT 50°-90° METAL CROWN

PREPARATION

- Medium grain bur 878-524-012, 878-524-016 (short teeth), 879-524-012, 879-524-016 (long teeth), for 50° metal ceramic crown (878-514-012/016 879-514-012/016 fine grain red ring bur to finish preparation)
- Medium grain bur 850-524-018, 847-524-016, 848-524-018 for 90° crown preparation (850-514-018, 847-514-016, 848-514-018 fine grain red ring bur to finish preparation)
- Bur 811 for preparation (524-037) and finishing (514-037) of occlusal reduction
- End cut medium grain bur 839-524-016 for 90° butt margin interproximal and lingual/palatal preparation (839-514-016 red ring bur to finish preparation)
- Brown rubber point SHINY33 to polish preparation

