

ENAMEL PLUS TENDER

Appearance of natural tooth, technique and aesthetics of ceramic

Micro-hybrid composite that can be used both directly in the mouth and in laboratory with a high elasticity dentine body, a paste opaque and a bonding that guarantees a unique adhesion.

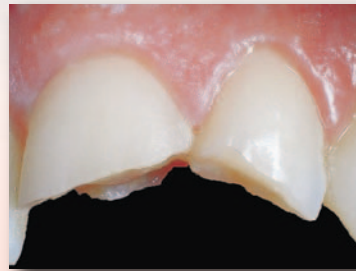
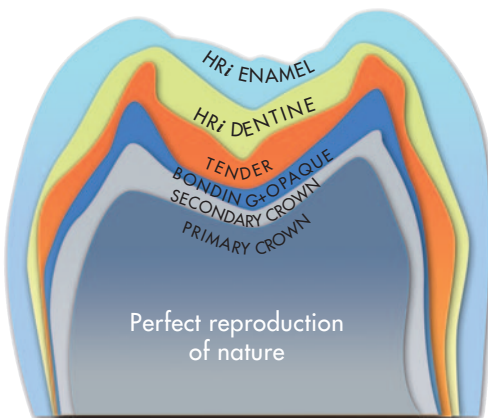
TENDER: high elasticity dentine body

HRi: high resistance enamel body

THE WINNING MATCH

LIKE CERAMIC BETTER THAN CERAMIC ...

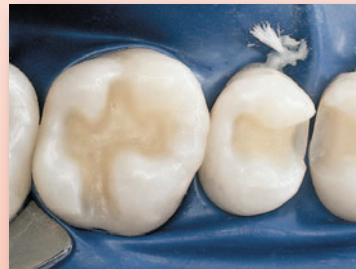
It is possible to make adjustments also in the dental practice with the same material used in the laboratory. Enamel plus HRi can be used both for luting, making in that way at the same time a relining of the manufactured article, and as a liner, before taking the impression (available also "flow"). It allows more possibilities in implant solution and it is ideal for combined cases.



Complex fractures (Dr. Lorenzo Vanini)



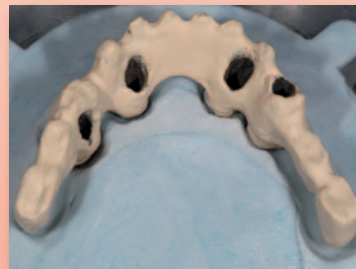
Cementation and possible adjustments made always with the same material



Preparation: "HFO Flow" can be used as liner.



Composite inlay cemented with "HFO OW" (Dr. Lorenzo Vanini)



Composite build up on implants:
Tender opaque



Pressing technique with flask: Dentine



Pressing technique with flask: Enamel



Completed case by Mr. D. Rondoni



Ref	Description	Q.ty
TENDER1H	ENAMEL PLUS TENDER Introductory Kit	
	7 Tender: T2, T3, T4, T5, MW, MO, MY	7x2,5 g
	4 HRi dentine: UD2 (A2), UD3 (A3), UD4 (A4), UD5	4x2,5 g
	3 HRi universal enamel: UE1, UE2, UE3	3x2,5 g
	1 intensive enamel: Intensive White Spot (IWS)	2,5 g
	1 opalescent enamel OBN	2,5 g
	2 paste opaque: light, clear	2x3 g
	1 Tender bonding metal primer	2,5 ml
	2 Temp Chips retentions: standard, micro	2x10 g
	1 Temp Chips adhesive	20 ml
	TENDER7H	ENAMEL PLUS TENDER Inlays Kit
2 Tender: T4-MO		2x2,5 g
3 HRi dentine: UD2 (A2), UD3 (A3), UD4 (A4)		3x2,5 g
1 HRi universal enamel: UE2		2,5 g
1 Enamel plus Stain Flow: BROWN2		2 g