



BIS-G-MA FREE VERSION V.1  
**BPA  
FREE**  
DOES NOT CONTAIN BISPHENOL A

# ENAMEL PLUS HR*i* BIO FUNCTION

New composite with unique characteristics

- > Biocompatible
- > Similar abrasion to natural enamel
- > Ideal handling, sculptibility and polishability



## ENA FLOW SEALANT BIO

For natural tooth and composite restoration margin sealing

- > Fluorescent for a better control under UV light
- > Good wear resistance



# ENAMEL PLUS HRi BIO FUNCTION

Highly Biocompatible Composite for Anteriors and Posteriors  
Composite system for direct and indirect technique, with mechanical and functional characteristics similar to natural enamel

## CHARACTERISTICS

- Highly Biocompatible, does not contain Co-monomers nor Bis-GMA
- Similar abrasion to natural enamel
- Mechanical and functional characteristics similar to gold
- Ideal polishability and high gloss retention over time
- Ideal handling: it does not stick to the instrument
- Excellent sculptibility
- Suitable for direct and indirect technique
- High Radiopacity
- Contains Fluoride

3 enamel and 9 dentine shades are available:

- **BF1** low value, **BF2** medium value, **BF3** high value
- **BD0** - **BD0,5** - **BD1** - **BD2** - **BD3** - **BD3,5** - **BD4** - **BD5** - **BD6**

Completely biocompatible to guarantee a perfect integration in harmony with the human body without releasing any toxic substances. High stability resin matrix and absence of nanoparticles in the powders generated by abrasion phenomenon that could be absorbed by the body. The UDMA and TCDDMDMA innovative formula is Bis-GMA free, a monomer that can liberate Bisphenol-A (BPA), an organic compound that exhibits estrogenic properties in human body causing health problems.

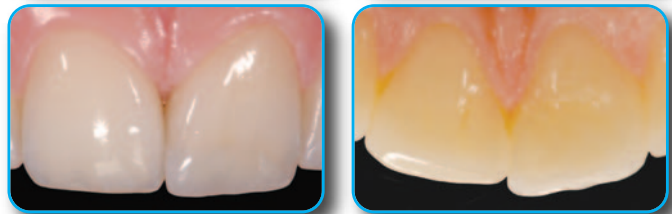
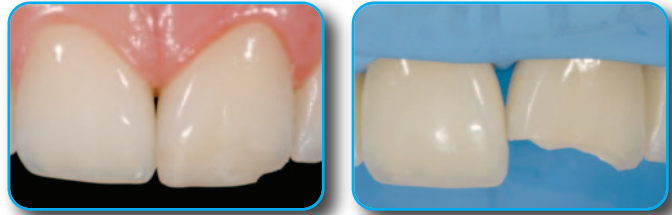
Initial case before rehabilitation



Final case after rehabilitation with direct technique in lower sector and indirect technique in upper sector



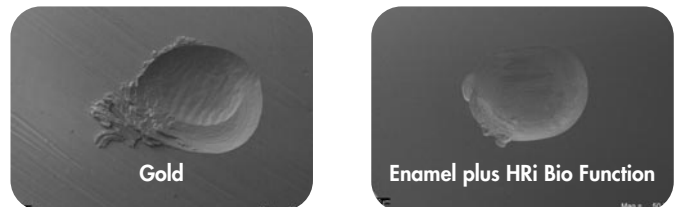
Direct composite restoration with dentine and enamel Enamel plus HRi Bio Function



Clinical cases of Dr. Lorenzo Vanini

## WEAR SURFACES

after 120.000 cycles by two-body wear test in a dual axis chewing simulator (University of Chieti - Prof. Camillo D'Arcangelo)



50x SEM images. The abrasion of Enamel plus HRi Bio Function is similar to gold and therefore to the natural enamel.

## ABRASION

	Depth (mm)	Volume (mm <sup>3</sup> )
<b>Natural enamel</b>	<b>0.216</b> (0.070)	<b>0.404</b> (0.200)
Gold type III	0.219 (0.060)	0.328 (0.140)
Composite F* (enamel) light cured with Laborlux**	0.459 (0.068)	1.017 (0.239)
Composite F* (enamel) light cured with Led	0.464 (0.069)	0.972 (0.247)
<b>Enamel plus HRi Bio Function</b> light cured with Led	<b>0.252</b> (0.059)	<b>0.454</b> (0.057)
<b>Enamel plus HRi Bio Function</b> light cured with Laborlux**	<b>0.212</b> (0.052)	<b>0.375</b> (0.052)

\* reference composite chosen after identified as the best among the ones tested during the preliminary phase

\*\* curing unit for laboratory; it cures with heat (ca. 70°-80°C)

## PHYSICAL DATA

	MPa
Vickers Hardness	685
Flexural Strength	150
Modulus of elasticity	11.600
Compressive Strength	460

Physical data maintained till 4 mm of depth with LED light curing unit (minimum power 1000 mW)

## ENAMEL PLUS HRi BIO FUNCTION KIT



CHR12



CHR6BFD



CR3FB



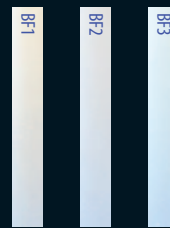
Ref	Description	Q.ty
CHR12	<b>ENAMEL PLUS HRi BIO FUNCTION Complete Kit</b> including 12 syringes 5 g with holder 9 dentine: BD0, BD0,5, BD1 (A1), BD2 (A2), BD3 (A3), BD3,5 (A3,5), BD4 (A4), BD5, BD6 3 enamel: BF1, BF2, BF3	12x5 g
CHR6BFD	<b>ENAMEL PLUS HRi BIO FUNCTION Trial Kit</b> including 6 syringes 2,5 g with holder 4 dentine: BD1 (A1), BD2 (A2), BD3 (A3), BD4 (A4) 2 enamel: BF2, BF3	6x2,5 g
CR3FB	<b>ENAMEL PLUS HRi BIO FUNCTION Trial Kit</b> including 3 syringes 2,5 g 3 enamel: BF1, BF2, BF3	3x2,5 g
CHR12T	<b>ENAMEL PLUS HRi BIO FUNCTION Complete Kit</b> including 72 tips (6 tips x 12 shades) 9 dentine: BD0, BD0,5, BD1 (A1), BD2 (A2), BD3 (A3), BD3,5 (A3,5), BD4 (A4), BD5, BD6 3 enamel: BF1, BF2, BF3	12x6 pcs
CHR6BFDT	<b>ENAMEL PLUS HRi BIO FUNCTION Trial Kit</b> including 36 tips (6 tips x 6 shades) 4 dentine: BD1 (A1), BD2 (A2), BD3 (A3), BD4 (A4) 2 enamel: BF2, BF3	6x6 pcs
CSG12	<b>ENAMEL PLUS HRi BIO FUNCTION Shade guide</b> entirely made in composite; wedge-shaped to facilitate the chromatic effect verification of different thicknesses	12 shades

## DENTINE



- **Dentine** with fluorescence and increased translucency calibrated to natural dentine
- **Ultra-light dentine:** BD0 and BD0,5 for bleached teeth
- **Ultra-dark dentine:** BD5 and BD6 for cervical area and stratification technique

## ENAMEL



## Bio Function enamel

- **BF1** low value
- **BF2** medium value
- **BF3** high value

# ENAMEL PLUS HRi BIO FUNCTION REFILL



Ref	Description	Syringes
CHRBF1	Enamel plus HRi Bio Function enamel BF1	5 g
CHRBF2	Enamel plus HRi Bio Function enamel BF2	5 g
CHRBF3	Enamel plus HRi Bio Function enamel BF3	5 g
CHRBDO	Enamel plus HRi Bio Function dentine BDO	5 g
CHRBDO,5	Enamel plus HRi Bio Function dentine BDO,5	5 g
CHRB1	Enamel plus HRi Bio Function dentine BD1 (A1)	5 g
CHRB2	Enamel plus HRi Bio Function dentine BD2 (A2)	5 g
CHRB3	Enamel plus HRi Bio Function dentine BD3 (A3)	5 g
CHRB3,5	Enamel plus HRi Bio Function dentine BD3,5 (A3,5)	5 g
CHRB4	Enamel plus HRi Bio Function dentine BD4 (A4)	5 g
CHRB5	Enamel plus HRi Bio Function dentine BD5	5 g
CHRB6	Enamel plus HRi Bio Function dentine BD6	5 g

Ref	Description	Tips
CHRTBF1	Enamel plus HRi Bio Function enamel BF1	12x0,3 g
CHRTBF2	Enamel plus HRi Bio Function enamel BF2	12x0,3 g
CHRTBF3	Enamel plus HRi Bio Function enamel BF3	12x0,3 g
CHRTBDO	Enamel plus HRi Bio Function dentine BDO	12x0,3 g
CHRTBDO,5	Enamel plus HRi Bio Function dentine BDO,5	12x0,3 g
CHRTBD1	Enamel plus HRi Bio Function dentine BD1 (A1)	12x0,3 g
CHRTBD2	Enamel plus HRi Bio Function dentine BD2 (A2)	12x0,3 g
CHRTBD3	Enamel plus HRi Bio Function dentine BD3 (A3)	12x0,3 g
CHRTBD3,5	Enamel plus HRi Bio Function dentine BD3,5 (A3,5)	12x0,3 g
CHRTBD4	Enamel plus HRi Bio Function dentine BD4 (A4)	12x0,3 g
CHRTBD5	Enamel plus HRi Bio Function dentine BD5	12x0,3 g
CHRTBD6	Enamel plus HRi Bio Function dentine BD6	12x0,3 g

● Bio Function Enamel ● Bio Function Dentine



**Autoclavable syringe for tips**  
Facilitates the extrusion of composite.



COSMTS

## SYRINGE FOR TIPS

Ref	Description	Q.ty
COSMTS	Syringe for tips	1 pc