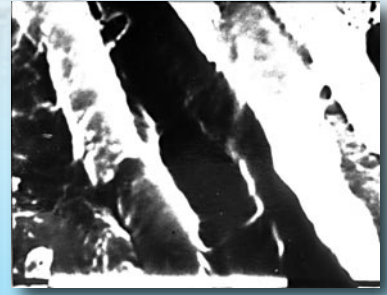


ENA BOND ADHESIVE ETCH & RINSE

EnaBond one-bottle



Microscope scanning of one bottle bonding 2300x and 3000x

The detail evidences the high penetration of dentine enamel bonding into the dentine tubuli (Prof. Vasilios Kaitsas).

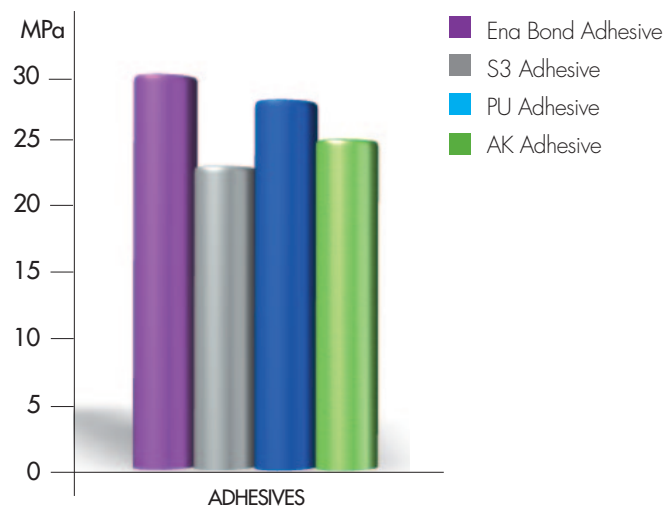
V generation adhesive One-Bottle

Ena Bond is used with Etch & Rinse technique and applied at least in two layers after etching with Ena Etch.

CHARACTERISTICS

- Aesthetics & Retention
- Bond strength values over the average industry: 30 MPa*
- Ethanol based special composition
- Dual catalyst used with dual composite
- BIS-GMA free

STRESS AT MAXIMUM BREAKING LOAD*



* Test made by University of Chieti - Prof. Camillo D'Arcangelo - Dr. Tonino Traini, in comparison with three other adhesive systems (see diagram)



Catalyst for dual curing luting

Ref	Description	Q.ty
COSM300	ENA BOND ONE-BOTTLE ADHESIVE Ena Bond light curing Bonding Phosphoric acid 37% Accessories	5 ml 2 ml

Ref	Description	Q.ty
COSM300A	Ena Bond light curing bonding	5 ml
COSM300D	Ena Bond Catalyst makes bonding dual	5 ml
COSM3B	Mixing base	20 pcs

IV generation two-bottle adhesive

Using Ena Bond as a Primer, after etching with Ena Etch, and Ena Seal as a second layer of unfilled adhesive resin, you can get excellent adhesion results and a perfect seal, converting Ena Bond into a Two-Bottle adhesive system.

CHARACTERISTICS

- Excellent adhesion values*
- 24 MPa on dentine

* Test made by University of Chieti - Prof. Camillo D'Arcangelo, in comparison with two other self-etching adhesive systems with Primer

Ref	Description	Q.ty
COSM300K	ENA BOND TWO-BOTTLE ADHESIVE	
	Ena Bond light curing Bonding	5 ml
	Ena Seal light curing resin	5 ml
	Phosphoric acid 37%	2 ml
	Accessories	



EnaBond

two-bottle

ENA SEAL

Low viscosity light curing sealant

- Adhesive resin in combination with Ena Bond
- Brush surface conditioner (do not use with new HRi Universal Enamel)
- Composite surface sealant
- Composite restoration margin sealant



New formula



Ref	Description	Q.ty
COSZ100	ENA SEAL SEALANT - Ena Bond System	
	Ena Seal light curing sealant	5 ml
	Phosphoric acid 37%	2 ml
	Accessories	
COSZ10	Ena Seal light curing sealant	5 ml