

ENA ETCH



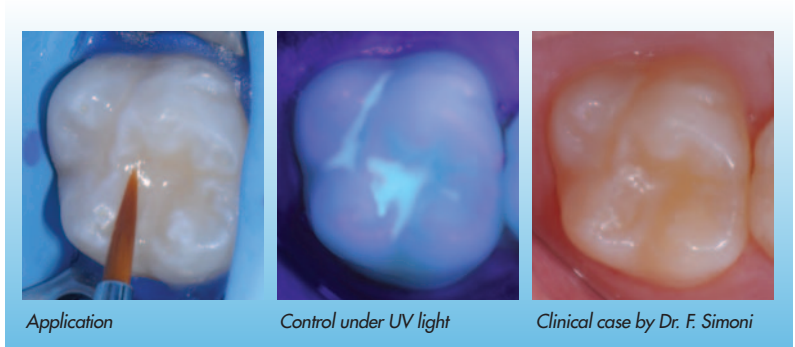
Ref	Description	Q.ty
COSM101B	ENA ETCH Phosphoric acid 37% without silicon bulk syringe usable with 2 ml rechargeable syringes	1x25 ml 2x2 ml

Ref	Description	Q.ty
COSM101	Phosphoric acid 37% without silicon	2x2 ml
COSM3S	Ena Bond applicators: small ivory	50 pcs
COSM3M	Ena Bond applicators: medium blue	50 pcs



COSM101B

ENA FLOW SEALANT "BIO"



Pit & Fissure Sealant
 Light curing fluid sealant
 Fluorescent for a better control under UV light
 Good wear resistance

- Natural tooth surface sealant
- Composite restoration margin sealant
- BIS-GMA and Bisphenol-A free



Ref	Description	Q.ty
EHFS	ENA FLOW SEALANT Pit & Fissure Sealant Disposable tips 0,8 mm	2 g 3 pcs