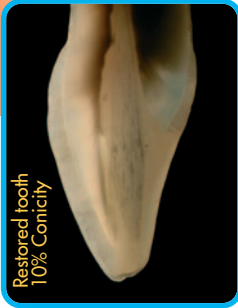


Ena Post

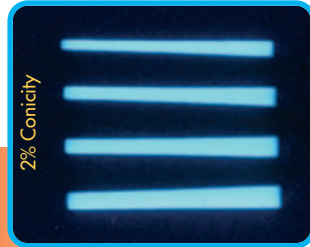
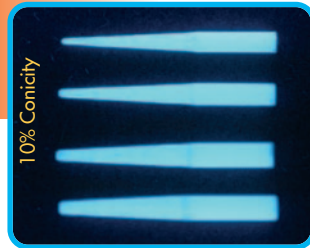
MICROSCOPY

Prof. Vassilios Katsiras



SECTION

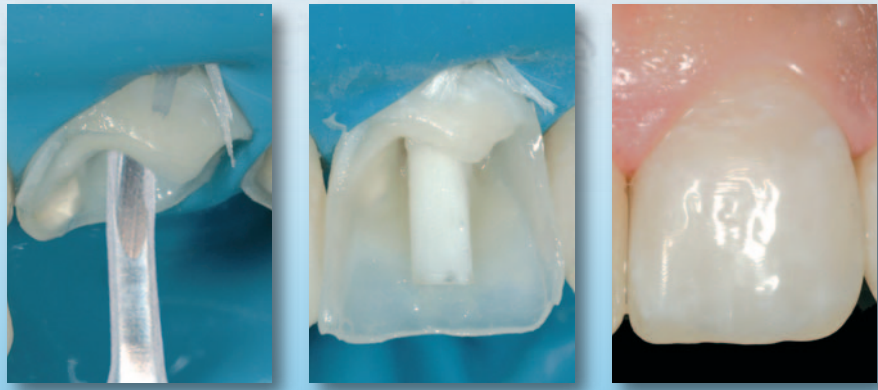
UV LIGHT

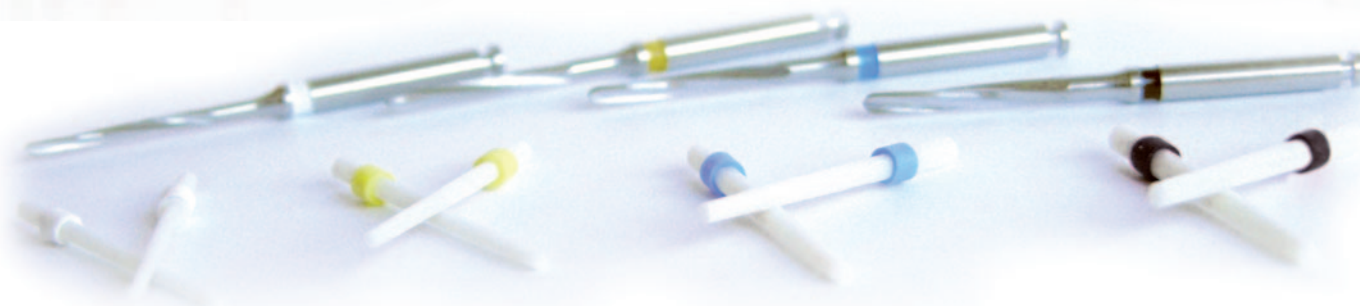


Perfect functional and aesthetic integration with glass fibre post and composite
Restoration made by Dr. Lorenzo Vanini

OPERATIVE & TECHNOLOGICAL ADVANTAGES

- Aesthetic: fluorescent and dentine colour
- Functional: same elasticity of dentine
- Perfectly integrated with the tooth, cement and restorative material
- The only post with silanized fibres inserted in the same resin of restorative material (Enamel plus HRi)
- Perfect silanization
- Visible on X-ray only
- Coloured rings for easy identification



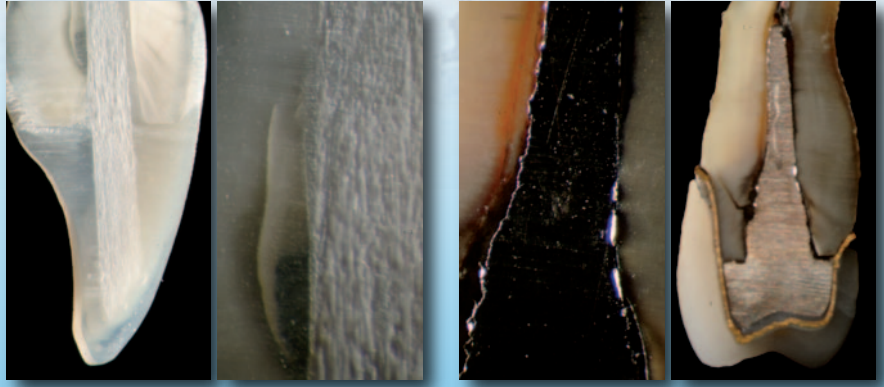


Ref	Description	Q.ty
CP0200	AESTHETIC POST KIT ENA POST 2% CONICITY: Ena Post Fiber Post ø 0,8 - 1,25 mm Ena Post Fiber Post ø 1,0 - 1,45 mm Ena Post Fiber Post ø 1,2 - 1,65 mm Ena Post Fiber Post ø 1,4 - 1,88 mm Ena Post drill 1 x each size	5 pcs 5 pcs 5 pcs 5 pcs 4 pcs
CP0208	Ena Post Fiber Post white ring ø 0,8 - 1,25 mm	10 pcs
CP0210	Ena Post Fiber Post yellow ring ø 1,0 - 1,45 mm	10 pcs
CP0212	Ena Post Fiber Post blue ring ø 1,2 - 1,65 mm	10 pcs
CP0214	Ena Post Fiber Post black ring ø 1,4 - 1,88 mm	10 pcs
CP0208-30	Ena Post Fiber Post white ring ø 0,8 - 1,25 mm	30 pcs
CP0210-30	Ena Post Fiber Post yellow ring ø 1,0 - 1,45 mm	30 pcs
CP0212-30	Ena Post Fiber Post blue ring ø 1,2 - 1,65 mm	30 pcs
CP0214-30	Ena Post Fiber Post black ring ø 1,4 - 1,88 mm	30 pcs
CPF0208	Ena Post white ring drill ø 0,8 - 1,25 mm	1 pc
CPF0210	Ena Post yellow ring drill ø 1,0 - 1,45 mm	1 pc
CPF0212	Ena Post blue ring drill ø 1,2 - 1,65 mm	1 pc
CPF0214	Ena Post black ring drill ø 1,4 - 1,88 mm	1 pc

Ref	Description	Q.ty
CP1000	AESTHETIC POST KIT ENA POST 10% CONICITY: Ena Post Fiber Post ø 0,5 - 1,6 mm Ena Post Fiber Post ø 0,7 - 1,8 mm Ena Post Fiber Post ø 0,9 - 2,0 mm Ena Post Fiber Post ø 1,1 - 2,2 mm Ena Post drill 1 x each size	5 pcs 5 pcs 5 pcs 5 pcs 4 pcs
CP1005	Ena Post Fiber Post white ring ø 0,5 - 1,6 mm	10 pcs
CP1007	Ena Post Fiber Post green ring ø 0,7 - 1,8 mm	10 pcs
CP1009	Ena Post Fiber Post red ring ø 0,9 - 2,0 mm	10 pcs
CP1011	Ena Post Fiber Post blue ring ø 1,1 - 2,2 mm	10 pcs
CP1005-30	Ena Post Fiber Post white ring ø 0,5 - 1,6 mm	30 pcs
CP1007-30	Ena Post Fiber Post green ring ø 0,7 - 1,8 mm	30 pcs
CP1009-30	Ena Post Fiber Post red ring ø 0,9 - 2,0 mm	30 pcs
CP1011-30	Ena Post Fiber Post blue ring ø 1,1 - 2,2 mm	30 pcs
CPF1005	Ena Post drill (1 mark - white) ø 0,5 - 1,6 mm	1 pc
CPF1007	Ena Post drill (2 marks - green) ø 0,7 - 1,8 mm	1 pc
CPF1009	Ena Post drill (3 marks - red) ø 0,9 - 2,0 mm	1 pc
CPF1011	Ena Post drill (4 marks - blue) ø 1,1 - 2,2 mm	1 pc



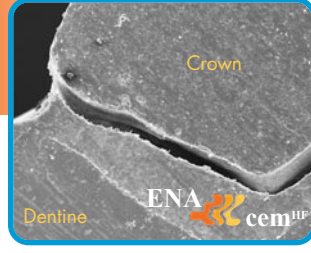
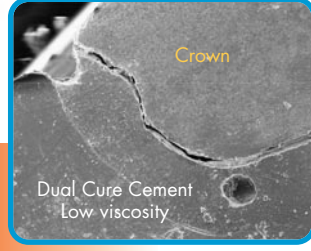
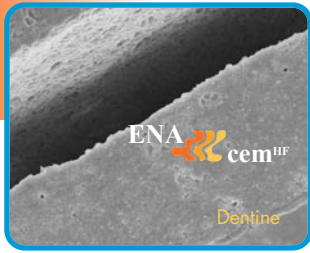
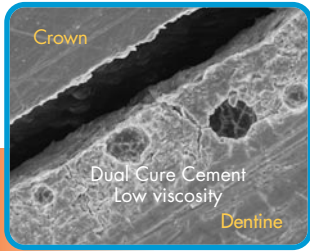
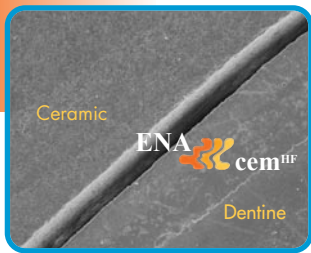
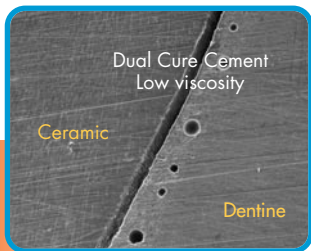
Ena Cem^{HF}



Perfect biocompatibility ...compared with cementation with Ena Post (2% conicity) and Ena Cem^{HF} ... with traditional technique

ANALYSIS UNDER MAGNIFICATION

Images under magnification show homogeneity of Ena Cem^{HF} unlike other Low Viscosity Dual Cure Cement that contains air bubbles



OPERATING ADVANTAGES

- Highly filled (77% in weight)
- Same physical characteristics as Enamel plus HRi
- No air bubbles
- Minimum thickness <50µm
- Fluorescent and radiopaque (210% Al)

TECHNOLOGICAL ADVANTAGES

- Crown & bridge luting
- Post luting & core build-up
- Composite and ceramic veneers, inlay and onlay luting



Dispenser to facilitate the application of the cement

CPCD



Perfect canal sealing (Ena Post 10%) with Ena Cem^{HF}



PHYSICAL CHARACTERISTICS

PRODUCT	THICKNESS μm (FORCE 35N)	VICKERS HARDNESS MPa	YOUNG MODULUS MPa	FLEXURAL STRENGTH MPa	COMPRESSIVE STRENGTH MPa	RADIOPACITY
Ena Cem ^{HF}	45	670	12850	116	342	210% Al
Dual/light curing flow cement	28/55	270	5471	88	216	30% Al
High viscosity composite	> 500	600/700	8000/11000	140	400	

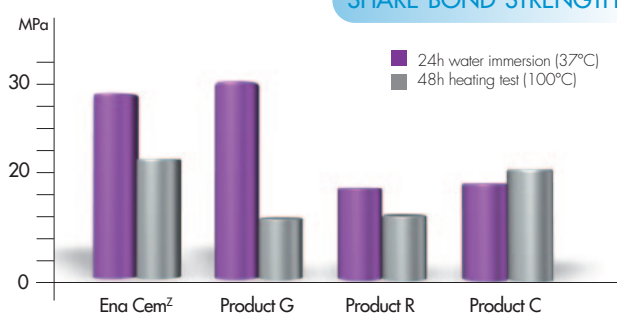
Ref	Description	Q.ty
CPCK	ENA CEM HF HIGHLY FILLED Dual cement Intro Kit: Ena Cem HF shades UD1-UD2-UD3-UD4 Ena-bond Bonding Ena-bond Bonding catalyst Ena-Etch Etching Gel 37% Automix Tips + Intraoral tips Orange applicators with plug	4x3 g 2 ml 2 ml 2 ml
CPCUD1	Ena Cem HF UD1 automix syringe	8 g
CPCUD2	Ena Cem HF UD2 automix syringe	8 g
CPCUD3	Ena Cem HF UD3 automix syringe	8 g
CPCUD4	Ena Cem HF UD4 automix syringe	8 g
CPCTIPN	Automix tips Ena Cem	50 pcs
CPCTIPL	Intraoral white tips Ena Cem	25 pcs
CPCTIPS	Automix tips Ena Cem with intracanal tips	50 pcs
COSM3A	Orange applicators with plug	50 pcs
CPCD	Dispenser with anatomic handle for Ena Cem HF cement	1 pc

Ref	Description	Q.ty
CPCTK	ENA CEM TRY-IN KIT Ena Cem TRY-IN shade UD1 Ena Cem TRY-IN shade UD2 Ena Cem TRY-IN shade UD3 Ena Cem TRY-IN shade UD4 Applicator tips CHFF25	2 g 2 g 2 g 2 g 25 pcs
CPCTUD1	Ena Cem TRY-IN shade UD1	2 g
CPCTUD2	Ena Cem TRY-IN shade UD2	2 g
CPCTUD3	Ena Cem TRY-IN shade UD3	2 g
CPCTUD4	Ena Cem TRY-IN shade UD4	2 g
Ref	Description	Q.ty
CPC	ENA CEM LOW VISCOSITY Dual low viscosity cement	8 g

Luting system for zirconia

Self-curing cement with special primer for luting of zirconia prosthodontic appliances on zirconia or titanium abutment

SHARE BOND STRENGTH



Physical data

Vickers Hardness	229 MPa
Modulus of elasticity	7085 MPa
Flexural strength	107 MPa
Compressive strength	229 MPa

Ref	Description	Q.ty
CPCK	ENA CEM ² for ZIRCONIA Introductory Kit Self curing cement Primer	8 g 5 ml
CPCZ	Ena Cem Z self curing cement	8 g
CPCZP	Ena Cem Z Primer	5 ml

ENA CEM^Z