

ENA MATRIX | Rubber Dam Instruments

Designed by Dr. Lorenzo Vanini

Iconographic documentation by Dr. Francesco Simoni



- EMP5S *Ena Matrix Frame for rubber dam small*
- EMP5M *Ena Matrix Frame for rubber dam medium*
- EMP5L *Ena Matrix Frame for rubber dam large*

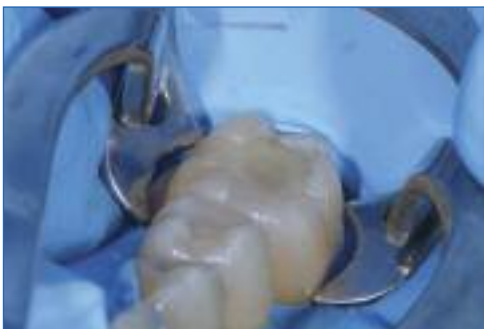


EMP6

Rubber Dam Punch with 6 holes : the bigger is used for molars on which the clamps are placed; the second for clamp-free molars; the third for premolars and anteriors (the smaller are generally indicated for small teeth and pedodontics).



EMP7



*Forceps for clamps
Also suitable also for Ena Matrix Rings*

RUBBER DAM CLAMPS



EMU22



Clamp 22 for superior and inferior molars



EMU02



Clamp 2 for superior and inferior premolars



EMU41



Clamps 41 for superior and inferior anteriors, when used in pair ideal for veneers cementation



EMU51



Clamp 51 small size for superior and inferior anteriors



EMU61



Clamp 61 medium size for superior and inferior anteriors