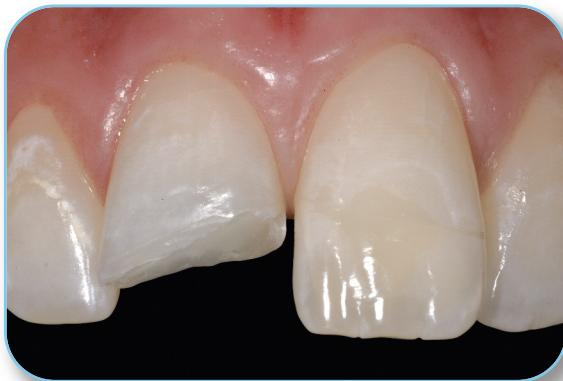




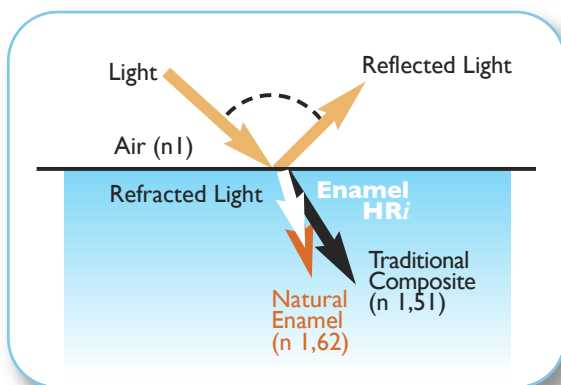
DR. LORENZO VANINI, THE CLINICIAN BEHIND THE SYSTEM



Composite enamel Enamel plus HRI/ Ena HRI thanks to its refractive index of 1,62 has optical properties very close to the one of natural enamel: increasing the thickness also the value increases.

With this composite enamel it is possible to manage the relation between translucency and value and the aesthetic integration of the margin because the light goes through two bodies (natural enamel and composite enamel) with the same refractive index and in this way it does not undergo any deviation, problem that on the clinical level gives a gray line on the margin.

Furthermore, in restorations of free incisal enamel the composite is perfectly integrated replacing the enamel in all the thickness with no need of using dentine bodies, unlike with the other composite materials.



HRI